

vtech[®]

Parent's Guide

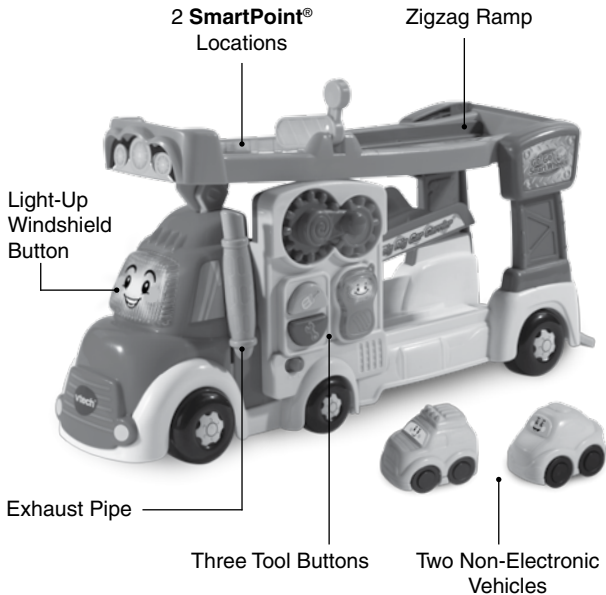
**Go! Go!
Smart Wheels**[®]

Big Rig Car Carrier[™]



INTRODUCTION

Thank you for purchasing the **Go! Go! Smart Wheels® Big Rig Car Carrier™**. Your little one will love loading cars on and off the big carrier and playing with the zigzag stunt ramp all while hearing a variety of playful sounds and melodies and learning about numbers, tools and phrases.



INCLUDED IN THIS PACKAGE

- One **Big Rig Car Carrier™**
- One parent's guide
- Two non-electronic cars

WARNING:

All packing materials such as tape, plastic sheets, packaging locks, removable tags, cable ties and packaging screws are not part of this toy, and should be discarded for your child's safety.

NOTE: Please keep this parent's guide as it contains important information.

Please cut and discard the strings that attach the vehicles to the unit before playing.

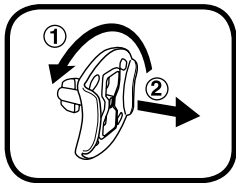
ATTENTION :

Pour la sécurité de votre enfant, débarrassez-vous de tous les produits d'emballage tels que rubans adhésifs, feuilles de plastique, attaches, étiquettes et vis d'emballage. Ils ne font pas partie du jouet.

NOTE : Il est conseillé de conserver ce guide des parents car il comporte des informations importantes.

Unlock the packaging locks:

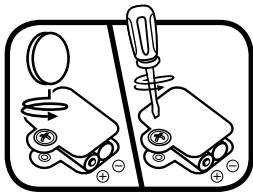
- ① Rotate the packaging locks 90 degrees anticlockwise.
- ② Pull out the packaging locks.



GETTING STARTED

BATTERY REMOVAL AND INSTALLATION

1. Make sure the unit is turned **OFF**.
2. Locate the battery cover on the bottom of the unit. Use a coin or a screwdriver to loosen the screw.
3. Remove old batteries by pulling up on one end of each battery.
4. Install 2 new AAA (AM-4/LR03) batteries following the diagram inside the battery box. (The use of new alkaline batteries is recommended for maximum performance.)
5. Replace the battery cover and tighten the screw to secure.



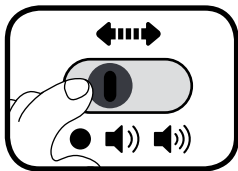
BATTERY NOTICE

- Use new alkaline batteries for maximum performance.
- Use only batteries of the same or equivalent type as recommended.
- Do not mix different types of batteries: alkaline, standard (carbon-zinc) or rechargeable, or new and used batteries.
- Do not use damaged batteries.
- Insert batteries with the correct polarity.
- Do not short-circuit the battery terminals.
- Remove exhausted batteries from the toy.
- Remove batteries during long periods of non-use.
- Do not dispose of batteries in fire.
- Do not charge non-rechargeable batteries.
- Remove rechargeable batteries from the toy before charging (if removable).
- Rechargeable batteries are only to be charged under adult supervision.

PRODUCT FEATURES

1. On/Off/Volume Control Switch

To turn the unit **On**, slide the **On/Off/Volume Control Switch** to the Low Volume (🔊) or High Volume (🔊) position. You will hear a song, a fun phrase and a playful sound. To turn the unit **Off**, slide the **On/Off/Volume Control Switch** to the **Off** ● position.



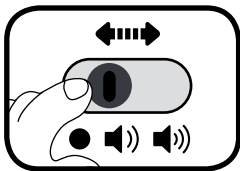
2. Automatic Shut Off

To preserve battery life, the **Go! Go! Smart Wheels® Big Rig Car Carrier™** will automatically power down after approximately 90 seconds without input. The unit can be turned on again by pressing any button.

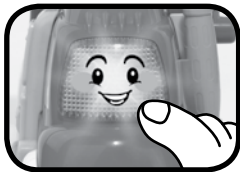
NOTE: If the unit powers down while playing, we suggest changing the batteries.

ACTIVITIES

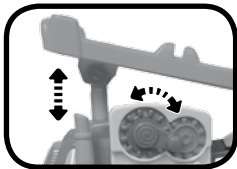
1. Slide the **Off/Low/High** switch to turn the unit **On**. You will hear sounds, a song and a phrase. The light will flash with the sounds.



2. Press the **Light-Up** button to hear sounds, songs, melodies and phrases. The light will flash with the sounds.



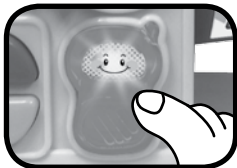
3. Turn the **Gears** to raise and lower the ramp, and trigger fun sounds and phrases. The light will flash with the sounds.



4. Push the **Exhaust Pipe** up and down to hear fun engine sounds. The light will flash with the sounds.



5. Press the **Walkie Talkie** button to hear interactive phrases and sound effects. The light will flash with the sounds.



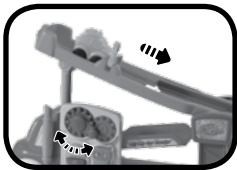
6. Press the **Screwdriver** and **Wrench** buttons to hear fun sounds and learn the name of each tool. The light will flash with the sounds.



7. Push the **Car Carrier** to hear sounds. If a melody is already playing, push the carrier to add fun sounds on top of the melody. The light will flash with the sounds.



8. Turn the **Gears** to raise the **Ramp**. Then place a car on top of the **Ramp**, lift the gate and launch the vehicle down the zigzag track.



9. Place any **SmartPoint**® vehicle (sold separately) on either of the **SmartPoint**® locations to trigger fun sounds, phrases and songs.



SONG LYRICS

Song 1

Go! Go! Smart Wheels!
Go! Go! Smart Wheels!
I'm a Go! Go! Smart Wheels carrier,
Hauling over the road,
Go, go!
I'm gonna find out what's around the bend.
Let's go, go and see,
Go, go!

Song 1 (short version)

Go! Go! Smart Wheels!
Go! Go! Smart Wheels!

Song 2

I'm gonna load the cars on my trailer,
I'm gonna load the cars up and go.

Song 3

We're gonna get rollin', cars on my back,
Let the open road keep us on track,
Yeah!

MELODY LIST

1. I've Been Working on the Railroad
2. London Bridge
3. On Top of Old Smokey
4. When Johnny Comes Marching Home Again
5. Green Grass Grew All Around
6. Big Rock Candy Mountain

CARE & MAINTENANCE

1. Keep the unit clean by wiping it with a slightly damp cloth.
2. Keep the unit out of direct sunlight and away from any direct heat source.
3. Remove the batteries when the unit will not be in use for an extended period of time.
4. Do not drop the unit on hard surfaces and do not expose the unit to moisture or water.

TROUBLESHOOTING

If for some reason the unit stops working or malfunctions, please follow these steps:

1. Please turn the unit **OFF**.
2. Interrupt the power supply by removing the batteries.
3. Let the unit sit for a few minutes, then replace the batteries.
4. Turn the unit **ON**. The unit should now be ready to play again.
5. If the product still does not work, replace with an entire set of new batteries.

If the problem persists, please call our Consumer Services Department at 1-800-521-2010 in the U.S. or 1-877-352-8697 in Canada, or by going to our website at vtechkids.com and filling out our Contact Us form located under the Customer Support link. A service representative will be happy to help you.

IMPORTANT NOTE:

Creating and developing **VTech®** products is accompanied by a responsibility that we at **VTech®** take very seriously. We make every effort to ensure the accuracy of the information, which forms the value of our products. However, errors sometimes can occur. It is important for you to know that we stand behind our products and encourage you to call our Consumer Services Department at 1-800-521-2010 in the U.S. or 1-877-352-8697 in Canada, or by going to our website at vtechkids.com and filling out our Contact Us form located under the Customer Support link, with any problems and/or suggestions that you might have. A service representative will be happy to help you.

Note:

This equipment has been tested and found to comply with the limits for a Class B digital device, pursuant to Part 15 of the FCC Rules. These limits are designed to provide reasonable protection against harmful interference in a residential installation. This equipment generates, uses and can radiate radio frequency energy and, if not installed and used in accordance with the instructions, may cause harmful interference to radio communications. However, there is no guarantee that interference will not occur in a particular installation. If this equipment does cause harmful interference to radio or television reception, which can be determined by turning the equipment off and on, the user is encouraged to try to correct the interference by one or more of the following measures:

- Reorient or relocate the receiving antenna.
- Increase the separation between the equipment and receiver.
- Connect the equipment into an outlet on a circuit different from that to which the receiver is connected.
- Consult the dealer or an experienced radio/TV technician for help.

Caution: Changes or modifications not expressly approved by the party responsible for compliance could void the user's authority to operate the equipment.

Supplier's Declaration of Conformity

Trade Name:	VTech®
Model:	5211
Product Name:	Big Rig Car Carrier™
Responsible Party:	VTech Electronics North America, LLC
Address:	1156 W. Shure Drive, Suite 200, Arlington Heights, IL 60004
Website:	vtechkids.com

THIS DEVICE COMPLIES WITH PART 15 OF THE FCC RULES. OPERATION IS SUBJECT TO THE FOLLOWING TWO CONDITIONS: (1) THIS DEVICE MAY NOT CAUSE HARMFUL INTERFERENCE, AND (2) THIS DEVICE MUST ACCEPT ANY INTERFERENCE RECEIVED, INCLUDING INTERFERENCE THAT MAY CAUSE UNDESIRE OPERATION.

CAN ICES-3 (B)/NMB-3(B)

**Visit our website for more
information about our products,
downloads, resources and more.**

vtechkids.com

Read our complete warranty policy online at
vtechkids.com/warranty

